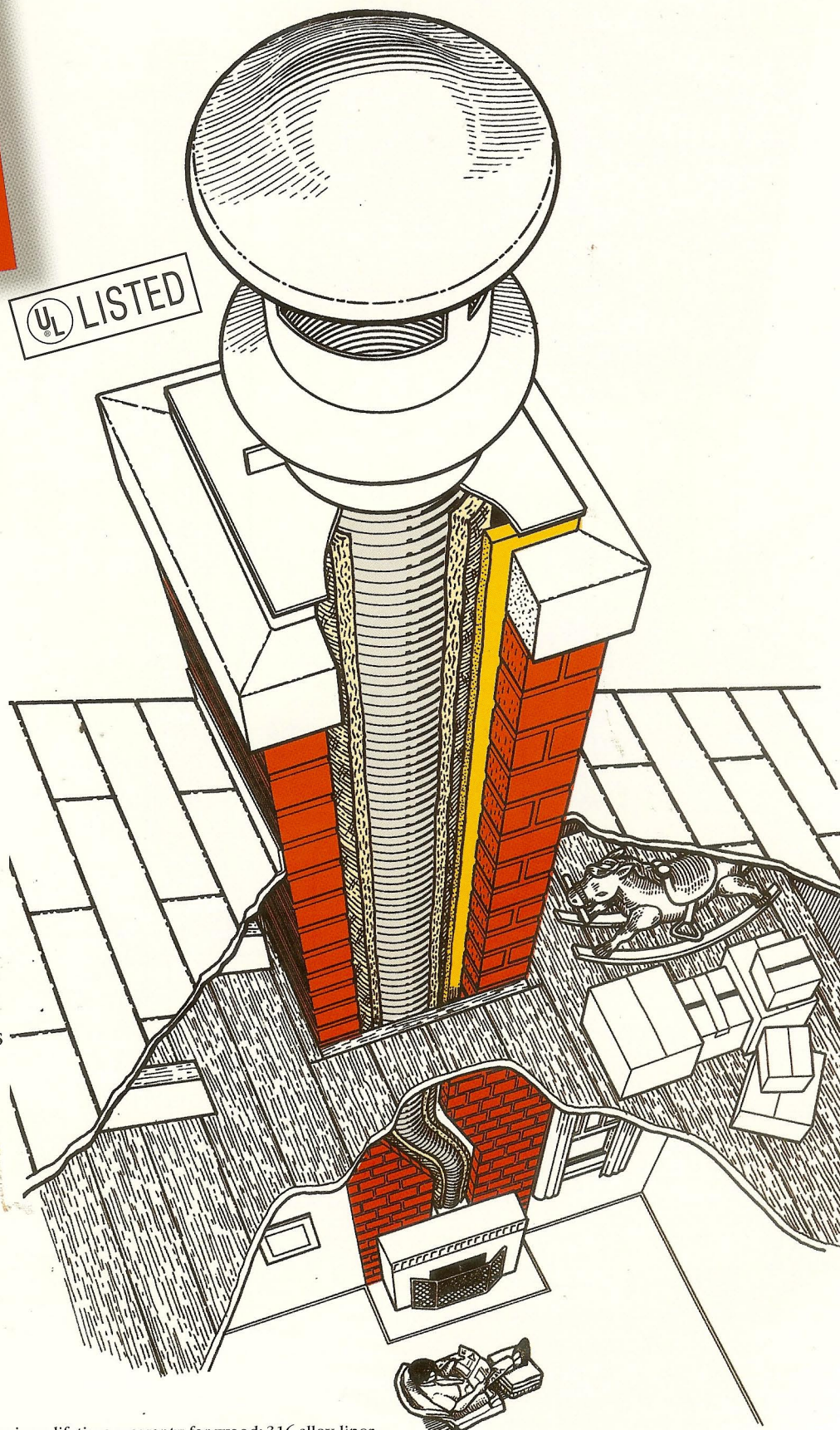


Revitalize your chimney with a HomeSaver® Chimney Relining System.

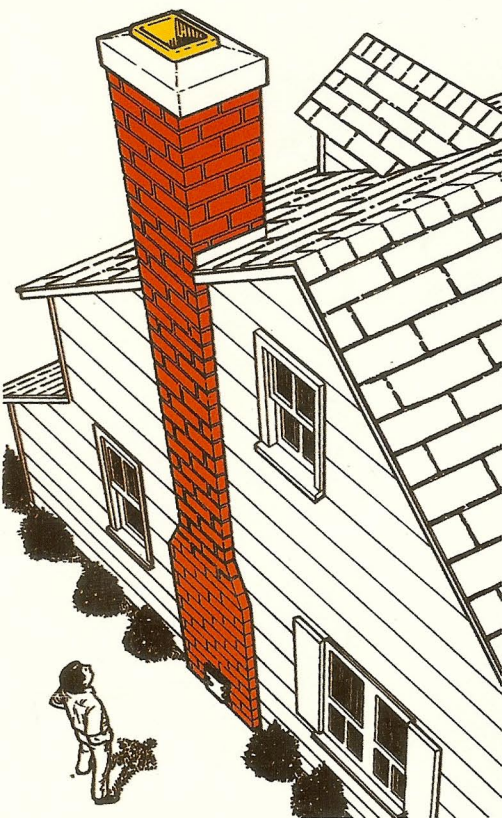
HomeSaver will restore and revitalize your chimney by putting four layers of stainless steel plus insulation between your chimney flue and the defects in your chimney walls. This will add to the safety of your home and family. And it will increase the resale value of your home.

HomeSaver's 4-ply stainless steel construction is unsurpassed in strength and protection. It has been tested and listed by Underwriters Laboratories to their highest heat test standard. And for woodburning applications, HomeSaver® Chimney Relining Systems are warranted for as long as you own your home.*

HomeSaver can reline virtually any chimney configuration you may have — from single, straight flues, to multiple, connected flues with bends and size changes. Talk to your HomeSaver installer today for all the details.

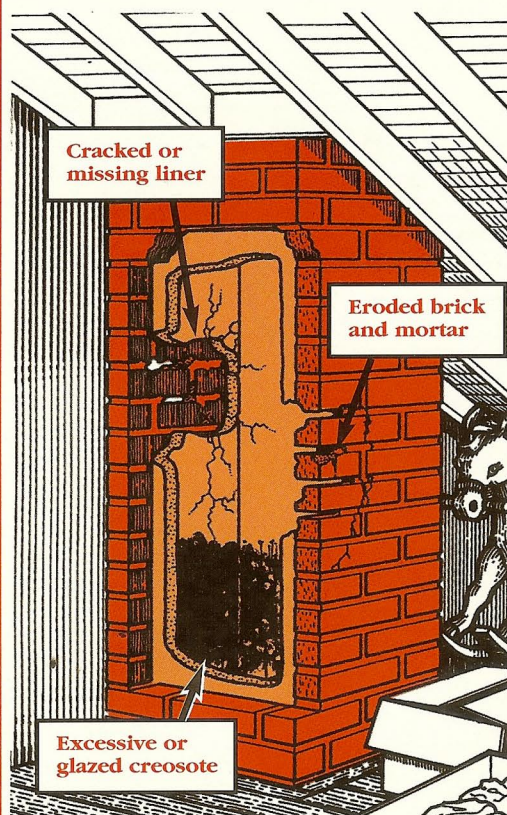


But my chimney looks fine on the outside.”



Your chimney, like most chimneys, probably appears to be in fine condition on the *outside*. But let's take a close look at what really counts in chimney operation...*the inside*.

Now look *inside*...see the problems?

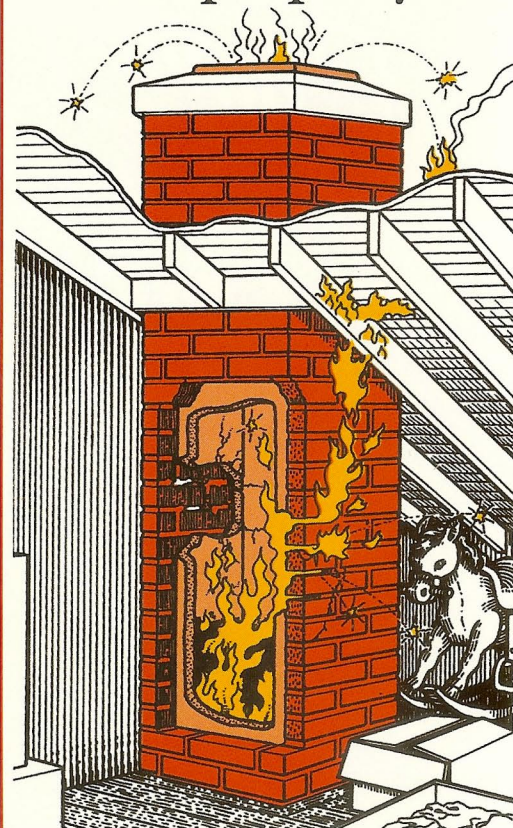


When we look at the interior of this same chimney we can find a number of imperfect conditions. Pieces are missing from the original clay liner and there are cracks in the clay liner. (Old chimneys might not even *have* a liner.) Mortar and bricks are loose and falling. And there is excessive buildup of combustible creosote on the flue walls.

These conditions are the result of a number of possible causes, including: flue fires, an improperly vented or misused stove, poor construction, excessive moisture, and more.

With continued use of this chimney, any of these conditions could lead to loss of property or life.

Chimney problems can cause a loss of property.



It happened thousands of times last year — chimney defects resulted in home fires.

It doesn't take much to start a home fire...a spark flitting through a crack in the chimney wall into the attic...a chimney ember igniting a creosote fire which then climbs the full height of the chimney "looking" for an opening in the chimney wall...or simply excessive heat reflected through chimney walls when a clay liner is missing.

Fortunately, the problems of a deteriorating chimney can be corrected without completely rebuilding your chimney.